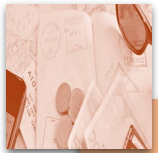


Your County Benefits can help you strengthen key components of your financial health!



Spending, Housing, and Budgeting

- [Budget Counseling through Balance](#)
- [Housing: Pre-purchase Counseling through Balance](#)
- [County Employee Down Payment Assistance Program](#)
- [Shared Housing Resources through HIP Housing](#)
- [Housing Finder from Claremont EAP](#)
- [LifeBalance Discount Program](#)



Saving

- [Healthcare Flexible Savings Account \(FSA\)](#)
- [Dependent Care Flexible Savings Account \(FSA\)](#)
- [ScholarShare 529 Workplace - College Savings Program](#)
- [San Mateo Credit Union \(SMCU\) partnership](#)
- [Health Savings Account \(HSA\) *](#)



Managing Debt

- [Debt Counseling through Balance](#)
- [Foreclosure Prevention Counseling through Balance](#)
- [Credit Report Review through Balance](#)
- [Quick Cash Loan Program through SMCU](#)
- [The Public Service Loan Forgiveness \(PSLF\) Program](#)
- [Kashable: Financial Wellness & Loan Program](#)



Planning for the Future

- [Deferred Compensation Plans \(Traditional and Roth 457\)](#)
- [Retirement Readiness Report through Remotiv](#)
- [Life Insurance](#)
- [Voluntary Legal Plan for wills and estate planning](#)
- [Retiree Health Reimbursement Arrangement \(RHRA\) Account **](#)

[Life Services Tool Kit from The Standard](#)
[Financial Consultation with Claremont EAP](#)
[Financial Education Classes with Empower](#)
[Financial Education Classes with San Mateo Credit Union](#)
[Financial Planning Classes for SamCERA Members](#)

* Eligibility based on County medical plan election

** Eligibility based on Bargaining Unit and MOU